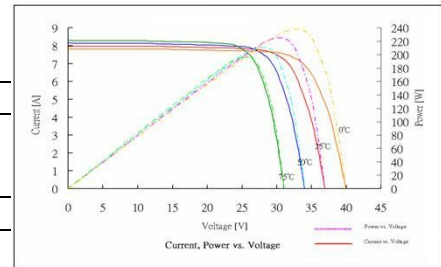
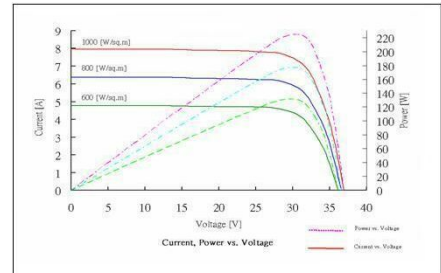



Specifications

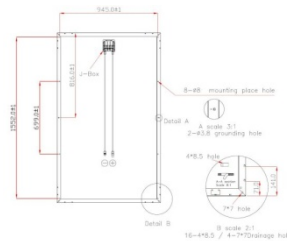
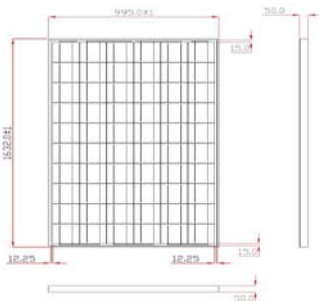
Maximum Power (Pmax)	230W
Voltage @ Pmax (Vpm)	30.15V
Current @ Pmax (Ipm)	7.63 ^a
Open circuit voltage (Voc)	37.36V
Short circuit current (Isc)	8.15A
Output tolerance	+/-3%
Maximum system voltage	1000Vdc
Series fuse rating	10 A
Application	DC 24V system
System Cell	6" Multicrystalline silicon
No. of cells and connections	60 pcs in series (6 x 10)
Efficiency of module	14.16%
Temperature coefficient of Pmax	-0.37%/°C
Temperature coefficient of Voc	0.32%/°C
Temperature coefficient of Isc	+0.038%/°C
Bypass diodes	3 diodes to avoid power decreasing by shade


ABSOLUTE MAXIMUM RATINGS

Operating temperature	-40 to +85°C
Storage temperature	-40 to +85°C

DIMENSION

Dimension (WxLxH)	1632 x 995 x 50 mm
Weight	Approximately 20.43Kg


5 YEARS ON MATERIAL

Warranty: 10 years limited warranty of 90% power output and 25 years limited warranty of 80% power output

QUALITY

ISO 9001:2000 certified; UL certified.
IEC/EN 61215 and IEC/EN 61730 are certified by TÜV.

Yuraku Pte Ltd
40 Ubi Crescent,
#01-02 Ubi Techpark, Singapore 408 567
Tel: +65 6238 2158
Fax: +65 6238 0076
Website: www.yuraku.com.sg

Yuraku S.r.l
Via Galvani 36/38
20019 Settimo Milanese (MILANO) Italy
Tel: +39 02 33514444
Fax: +39 02 335590580
Website: www.yuraku.it

Yuraku, SL
C/Florida Nº 1 (nave 4) Pol. Ind. Villapark
28670 – Villaviciosa de Odón – Madrid – España
Tel: +34 91 665 74 23
Fax: +34 91 616 63 24
Website: www.yuraku.es

create >> excite >> inspire

Terms and Specifications are subjected to change without notice
©2009 YURAKU PTE LTD