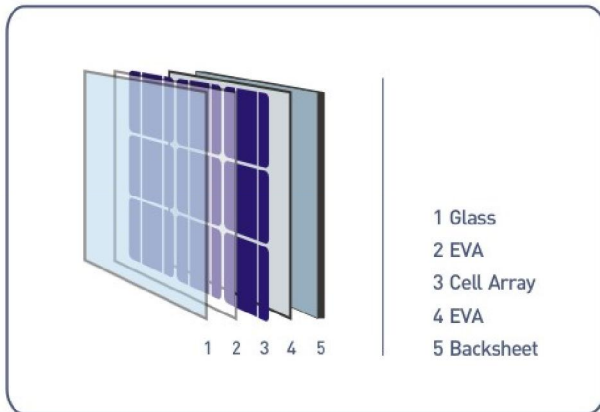




ASTROenergy
SOLAR

CHSM 5409M

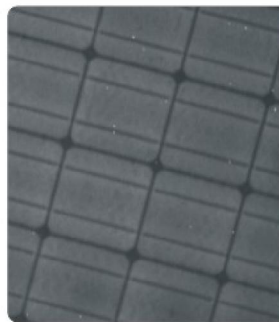


AVAILABLE WATTAGES	75	80	85	90	95
--------------------	----	----	----	----	----



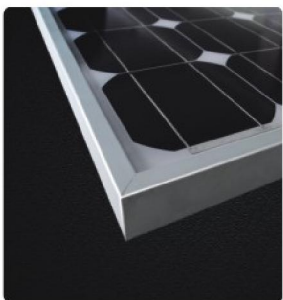
Precision Solar Cell Manufacturing

- First PV company in Mainland China to use Manufacturing Execution System (MES) in solar cell production. The products, processes, and equipments are strictly controlled using SPC tools for the highest quality and performance.



State-of-the-Art Solar Module Manufacturing

- Within the same power range and efficiency, cells are further sorted by the short circuit current in order to minimize losses caused by electric-mismatch.
- IV and EL tests are performed before the lamination to ensure the consistency of encapsulated cells and process reliability.
- The EL test is repeated on each module before shipping to ensure product's quality and reliability.



Aesthetic Appeal

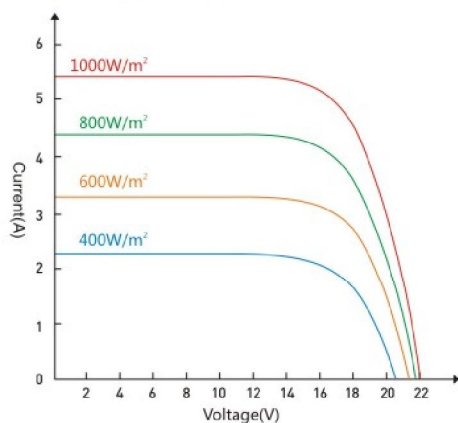
- Modules are assembled with high quality, smooth aluminum alloy frames.



CHSM 5409M

Electrical Characteristics

Electrical Characteristics



Pmax(Wp)	75	80	85	90	95
Isc(A)	5.21	5.28	5.36	5.43	5.47
Voc(V)	21.50	21.80	22.00	22.30	22.50
Imp(A)	4.81	4.88	4.97	5.03	5.12
Vmp(V)	15.59	16.39	17.10	17.80	18.50
Tolerance(Wp)	±3%				
Max. System Voltage(V)	DC1000V for SC II and DC600V for USA NEC				
NOCT	47±2°C				
Power Temp. Coeff(/°C)	-0.511%				
Current Temp. Coeff(/°C)	0.055%				
Voltage Temp. Coeff(/°C)	-0.374%				
Ambient Temp(°C)	-40-85				
Max. Mechanical Load(Kg/m²)	240				
Test Condition	Irradiance of 100 mW/cm², AM1.5 Spectrum, and a Cell Temperature of 25°C				

Dimension Characteristics

Length	1200 mm / 3.937 feet	Width	554 mm / 1.818 feet
Height	35 mm / 0.115 feet	Weight	10 kg / 22.0 lbs
Cell Type	125 × 125(mm) Monocrystalline Silicon		
Cell Matrix	4×9	Cell Number	36 pcs
Frame	Aluminum Alloy		

Front View and Back View

